

INSTRUCTION

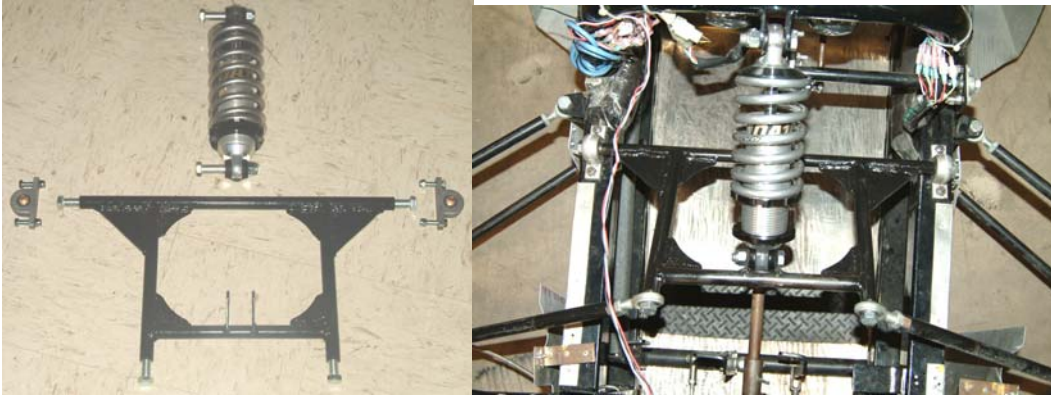
MANUAL

Copyright 2003 Sport Vehicles, LLCC
2073 South Almont Ave
Imlay City, MI 48444
810)724-7080
www.SportCycle.info

TABLE OF CONTENTS

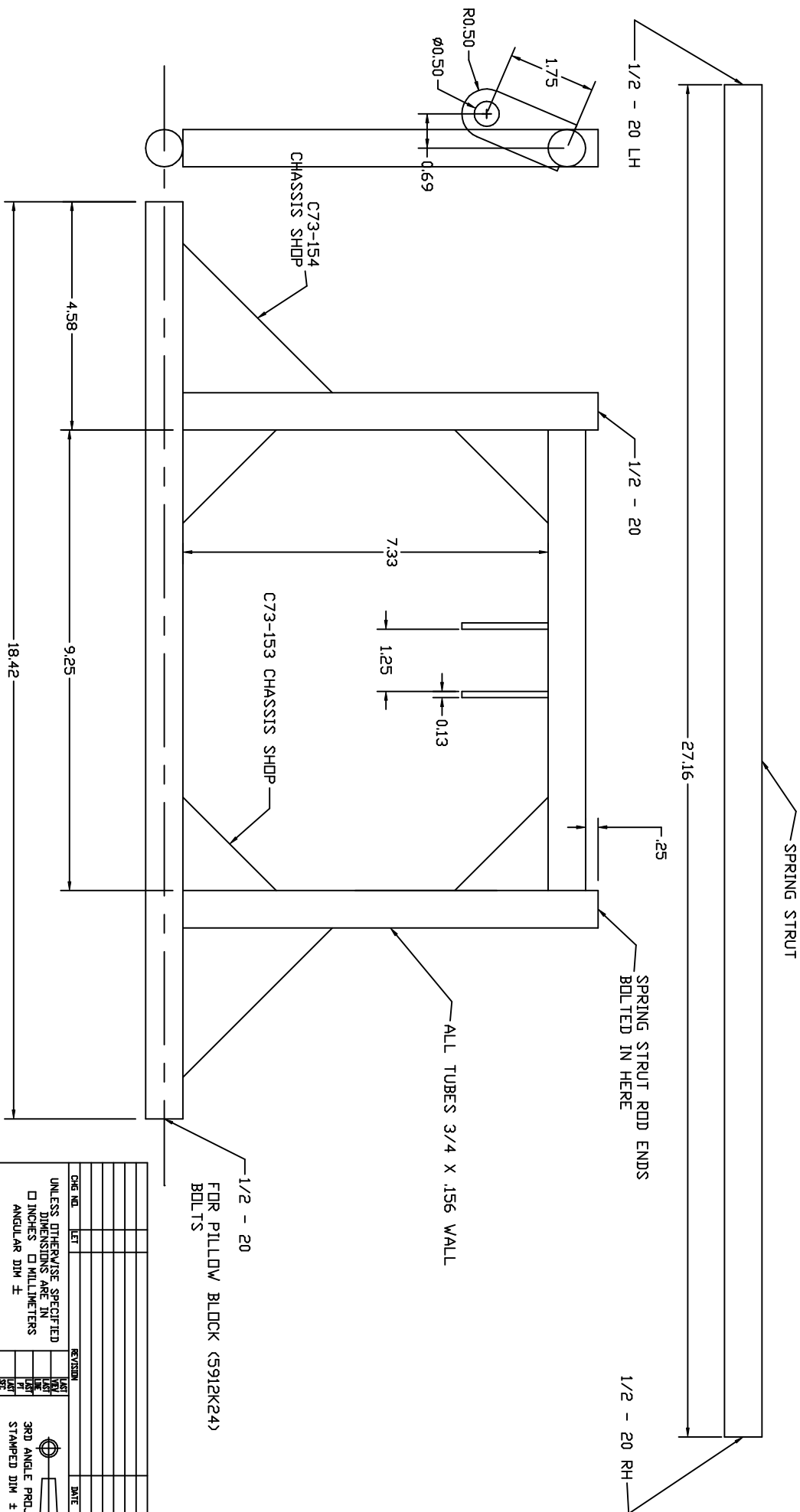
	Page
1. INTRODUCTION	1
2. PURCHASED ITEMS	2
3. DETAIL DRAWINGS	5
FRAME	6
BODY MOUNT BRACKETS	19
SHEET METAL	27
SUSPENSION	29
BRAKE/HUB KIT	38
SPRING SYSTEM	40
CONTROLS	42
4. PREPARING MOTORCYCLE	53
5. MOTORCYCLE ATTACHING BRACKET	55
6. EXTENDING THE WIRING HARNESS	63
7. REAR TIRE	65
8. OPERATING INSTRUCTIONS	66

Spring System



The following drawing shows the pivot mechanism that forms the suspension spring/shock system. This pivot is bolted to pillow block bearings mounted to the frame. The spring/shock unit connects between the pivot mechanism and brackets on the front roll bar. The ½ inch rod ends of the spring struts from the lower control arms are bolted to the pivot mechanism. This spring system is the key to the outstanding handling feel of the SportCycle. It provides a soft ride rate but an infinite roll rate. As a result the SportCycle corners without body roll.

Pivot - This pivot assembly is bolted to the upper frame roll mounted pillow blocks. The spring/shock lower bushing bolts to this pivot assembly with the upper bushing bolted to the tabs on the front roll bar. The spring strut rod ends bolt to the assembly to complete the spring system for the vehicle.



DATE	BY	REVISION	DATE	CHK	APP
10/17/00	107				

UNLESS OTHERWISE SPECIFIED
 DIMENSIONS ARE IN
 INCHES □ MILLIMETERS
 ANGULAR DIM ±

DRAWN BY: 107
 DATE: 10/17/00
 CHECKED BY: 107
 DATE: 10/17/00

3RD ANGLE PROJECTION
 STAMPED DIM ±

SPORT VEHICLES, LLC
 3578 S. Van Dyke
 Alhambra, MI 48003

SPP1VDT